

## This Month:

Space Week

Recycling, PSJA High

Hawk Watch SANWR

Caring For Our Elders

Community Garden

JDA Students Help Out

Fund Distribution UWSTX

Importance of Our Native Trees

# The Valley Spotlight

**FREE  
TAKE ME HOME**

May 2017

*The Little Paper You'll Want To Keep & Share*

Vol. 3 No. 12

**From the dawn of humankind to a mere 400 years ago, all that we knew about our universe came through observations with the naked eye. Then Galileo turned his telescope toward the heavens in 1610. The world was in for an awakening.**

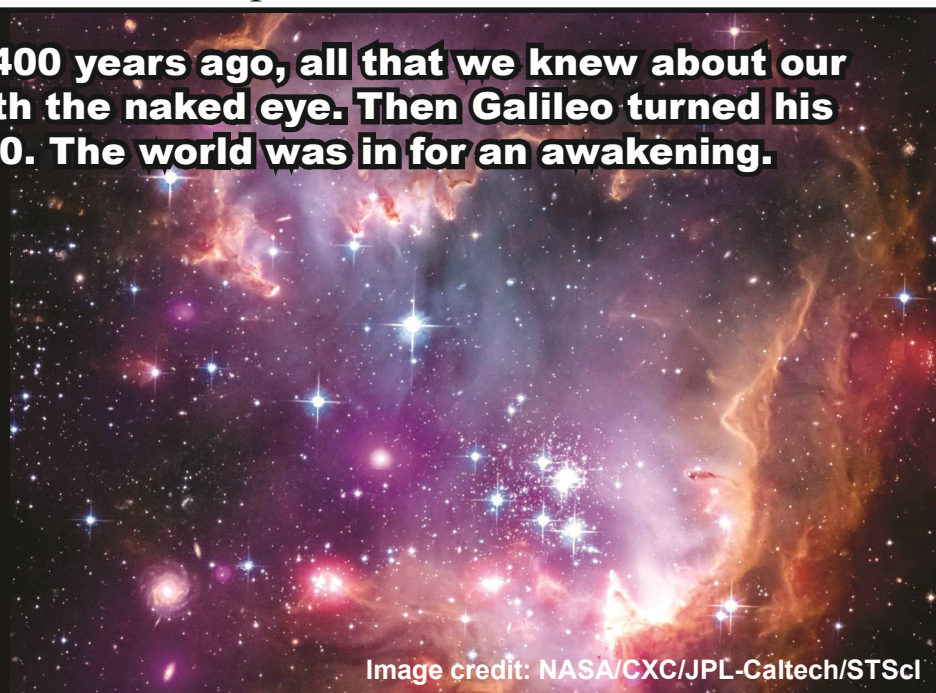


Image credit: NASA/CXC/JPL-Caltech/STScI

On April 24, 1990 the **Hubble Space Telescope** was launched into low-Earth orbit as part of a multi-billion-dollar project led by NASA and the European Space Agency. The bus-sized observatory is equipped with an 8-foot-wide focusing mirror and an array of cameras capable of seeing visible, infrared and ultraviolet light, and its eye-popping images have provided scientists and amateur astronomers alike with a glimpse into the inner workings of the universe.

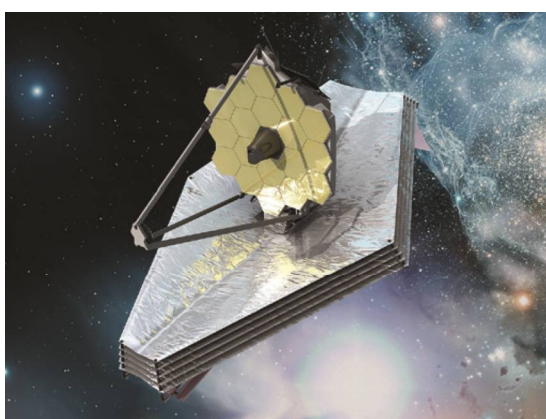
In the twenty-seven years that Hubble has been orbiting the Earth, at 17,000 mph, it has made more than 1.3 million observations creating an archive which contains more than 140 terabytes of data.

World census reports indicate that over fifty percent of the world's population is under thirty years of age. This means that one-half of the people on Earth have grown up seeing the images produced by Hubble as a part of everyday life.

### The James Webb Space Telescope

Referred to a simply "Webb", this telescope is planned for launch in October, 2018. Not intended as a "replacement"

Webb is Hubble's successor. Webb will primarily look at the Universe in the infrared, while Hubble studies it primarily at optical and ultraviolet wavelengths. Webb also has a much bigger mirror than Hubble. This larger light collecting area means that Webb can peer farther



back into time than Hubble is capable of doing. Hubble is in a very close orbit around the earth, while Webb will be over 930,000 miles away at the second Lagrange (L2) point. Webb will be the premier observatory of the next decade, serving thousands of astronomers worldwide. It will study every phase in the history of our Universe, from its beginning, to the formation of solar systems capable of supporting life on planets like Earth, to the evolution of our own Solar System.

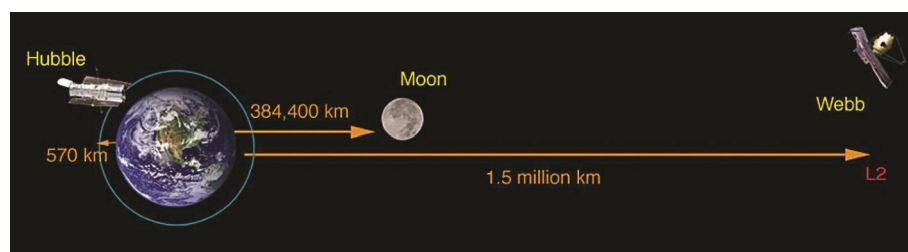
### Taken Under the 'Wing' of the Small Magellanic Cloud

The tip of the "wing" of the Small Magellanic Cloud galaxy is dazzling in this new view from NASA's Great Observatories. The Small Magellanic Cloud, or SMC, is a small galaxy about 200,000 light-years away that orbits our own Milky Way spiral galaxy.

The colors represent wavelengths of light across a broad spectrum. X-rays from NASA's Chandra X-ray Observatory are shown in purple; visible-light from NASA's Hubble Space Telescope is colored red, green and blue; and infrared observations from NASA's Spitzer Space Telescope are also represented in red.

The spiral galaxy seen in the lower corner is actually behind this nebula. Other distant galaxies located hundreds of millions of light-years or more away can be seen sprinkled around the edge of the image.

The SMC is one of the Milky Way's closest galactic neighbors. Even though it is a small, or so-called dwarf galaxy, the SMC is so bright that it is visible to the unaided eye from the Southern Hemisphere and near the equator. Many navigators, including Ferdinand Magellan who lends his name to the SMC, used it to help find their way across the oceans.



**Planned for launch in 2018, the James Webb Space Telescope will be located 1.5 million kilometers (over 930,000 miles) from Earth. Compared to Hubble which is in low Earth orbit currently about 340 miles in altitude.**



The man whose name NASA has chosen to bestow upon the successor to the Hubble Space Telescope is most commonly linked to the Apollo moon program, not to science. Yet, many believe that James E. Webb, who ran the fledgling space agency from February 1961 to October 1968, did more for science than perhaps any other government official and that it is only fitting that the Next Generation Space Telescope would be named after him.

## Celebrate Space Day ... The First Friday in May

Originally started to get America's youth interested in math and science, Space Day focuses upon creating an interest and awareness of all kinds of topics and issues related to space.

This holiday caught on quickly, and became wildly popular. On this day all kinds of space related organizations, groups and agencies hold celebrations, demonstrations, and educational programs.

Don't miss the opportunity to celebrate Space Day. Find an event near you and ...go! Visit a science center, or observatory. Get out your telescope and view the heavens. Watch television documentaries on space. Make this a fun day and create your own celebration with your kids or in the workplace. Teachers... don't miss creating a special lesson plan for Space Day. The kids will love it.

# Protecting Our Native Trees

by Thomas Ray Garcia

At the Pharr city commission meeting on Monday, April 3rd, several community activists spoke in favor of protecting the ancient oak trees off of West Kelly Ave. and South Jackson Rd.

The plot of land formerly abutting Eli Whitney Elementary School has become the site of a Fazoli's Italian restaurant slated to open this summer. Since 2011, commercial ventures such as Costco, At Home, and Raising Cane's have dominated the area, and the trees have paid the price.

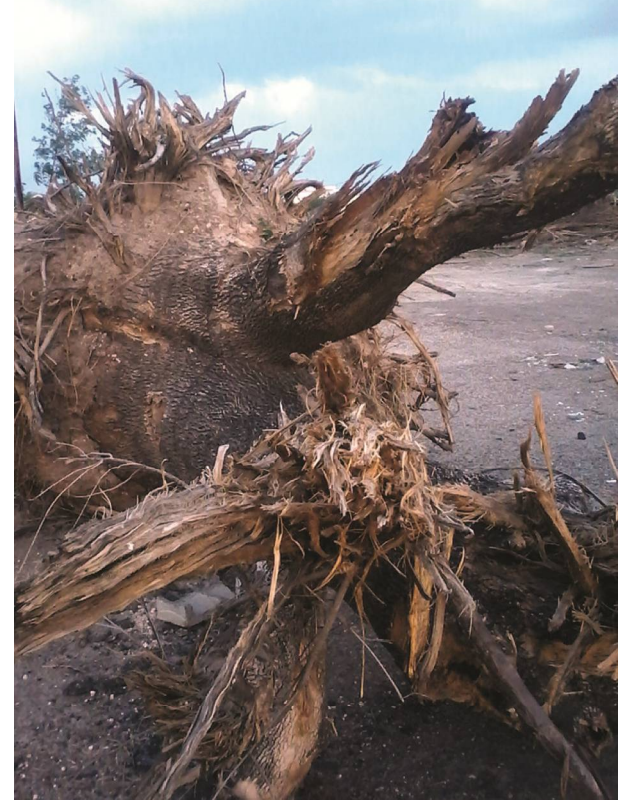
Pharr citizen, Dr. K.C. Fletcher spearheaded an initiative to save the trees with a petition campaign, which amassed over 150 signatures county-wide. He spoke before the commission to raise awareness about the economic and environmental benefits of trees.

"Removal or damage to these Fazoli's trees because of lack of enforcement of required best management practices will not be okay as we welcome another new business into Pharr," said Dr. Fletcher.

Two University of Texas – Rio Grande Valley students, including Julissa Roman, President of UT-RGV's Environmental Awareness Club, also explained how trees mitigate the effects of climate change.

In response to the activists' public comments, City Manager, Juan Guerra affirmed that the City of Pharr expects Fazoli's to protect the trees.

According to Guerra, "There's an incentive agreement with the company to save all those trees... so if they want the incentive, they gotta maintain those trees. So the expectation is that all those



trees should stay."

A round of applause followed the proclamation, which left the audience with a mixture of hope and concern.

Although construction has not yet begun, activists are wary of potential miscommunication between the construction company and the City of Pharr. They are also concerned about the cost-effectiveness of the incentive agreement and whether it would persuade Fazoli's not to demolish the trees in favor of more parking spaces.

Because the public has made their stance clear, Dr. Fletcher hopes the City of Pharr will abide by city ordinances to preserve their trees.

"We're asking that ordinance 2017-02 be strictly enforced," Dr. Fletcher said.

**LEARN TO FLY**  
in the World's  
Most Popular Aircraft

Call to schedule your  
**\$100 Introductory Flight**  
McGREERY AVIATION  
Flight Academy

**956-686-1774**

**GOODING**  
**R.V. CENTER**  
PARTS · SALES · SERVICE

1601 E Expressway 83  
Mission, TX 78572  
(956) 585-4481  
www.GoodingRV.com

Come and see us to fulfill your  
Camping  
and  
RVing Dreams!

SALEM  
BY FOREST RIVER  
TRAVEL TRAILERS

SABRE  
FIFTH WHEELS

Quailridge  
PARK MODELS

## Aviation History in May

The Boeing X-51 (or X-51 WaveRider) is an unmanned research scramjet aircraft for hypersonic flight at Mach 5 (3,300 mph; 5,300 km/h), an altitude of 70,000 feet (21,000 m).

The aircraft was designated X-51 in 2005. It completed its first powered hypersonic flight on May 26, 2010. The X-51 completed a flight of over six minutes and reached speeds of over Mach 5 for 210 seconds on May 1, 2013 for the longest duration powered hypersonic flight up to that time.



## The Valley Spotlight

is published by

Created Images and More

11924 E 83 Business

La Feria, Texas 78559

www.RGVaff.com

contact: Rod Graham ... 956-457-8600

rod@RGVaff.com

May 2017 issue Vol. 3 No. 12

© 2017 all rights reserved

# True Tales of a Valley Birder

by Keith Hackland (alamoinn@aol.com)

## Growing Money Trees

If I had a money tree, unfurling green dollars on each branch, would I nurture it, and help it grow to produce more and more green dollars?

You bet I would. Most folks would be thrilled to have a green money tree growing in their yard.

Well, there are several money trees growing in my yard. Almost every Valley yard grows money trees. The Valley is full of money trees. Our money trees here do not grow green dollars on each branch, instead they grow birds on each branch. Birds attract bird watcher tourists, people we call birders. Birders bring money with them and leave half a billion dollars a year here with us, spreading it around Valley businesses and birding destinations. We know this from a research study published by Texas A&M University (see southtexasnature.org, click on Nature Reports, then Economic Impact of Nature Tourism, and on pdf report Economic Impact of Nature Tourism).

Birders convert our trees into money trees, with their spending. But which trees are the money trees? They are typically trees native to the Valley. They have grown here for millenia, so are well adapted to Valley conditions of years of drought interspersed with wet tropical years. In particular, Anacua is very bird friendly, producing crops of yellow berries after rainfall. Other native Valley trees easy to grow and popular with birds for fruit, foraging, nesting, or roosting are Anacahuita Wild Olive, Blackthorn, Brazil, Catsclaw, Coma, Cedar Elm, Ebano, Hackberry, Huisache, Mesquite, Mexican Ash, Retama, and Tepehuaje.

While most of these money trees are available at Valley nurseries, it is amazing after rain to look around in the yard and find them growing on their own. Usually they have been planted by birds (from undigested seeds in their droppings). When they are small and short they are easy to transplant into a good location in our yard. These trees attract the birds we enjoy, and the birds that birders seek. But to complete the circle, how do we attract the birders, letting them know that we have great birds? The Valley is particularly successful in this skill.



We have a non-profit organization that specializes in attracting birders. Formed in 2001, South Texas Nature Marketing Co-op (STN) is a non-profit supported by Valley Chambers of Commerce, Convention & Visitors Bureaus, Valley Cities, birding destinations and service providers. It is unique in U.S., attracting birders mainly in two ways.

Firstly, by hosting outdoor writers from all over the world, and showing them our Valley birds, restaurants, and culture. These writers typically have a great time and pen wonderful stories about the Valley and its birds in magazines, newspaper travel sections, and online, reaching tens of thousands of birders on each story. This attracts more birders here, often carrying the story with them in their luggage so they can follow the route recommended in the story.

Secondly, STN exhibits at bird festivals in U.S. and bird fairs in Europe. These events offer birder trade shows, lectures, and field trips, and are attractive to birders who travel, our Valley target market.

Over the past 13 years this work has been so successful that other birding destinations in Texas have joined to support our effort.

With the richest birding in the United States occurring in Texas, this has raised our exhibit profile, an exhibit we call Texas Birding, and made it easier to attract attention. With the richest birding in Texas being in the Valley, it has raised the Valley's profile too, and made the Valley much more attractive, positioning us here as the richest birding location not just in Texas, but also in the United States. The Valley is number one in the U.S., and is in the top thirty birding spots in the world.

During past years, STN has exhibited at the following events:

**British Birdfair,**  
Great Britain, 27,000 birders

**Cape May Birding Festival,**  
NJ, 3,000 birders

**Rio Grande Valley Birding Festival,**  
Harlingen, TX, 3,000 birders

**Space Coast Birding Festival,**  
FL, 5,000 birders

**Norfolk Birdfair,**  
Great Britain, 2,500 birders

**Scottish Bird and Nature Fair,**  
Great Britain, 5,000 birders

**Hamburg Birdfair,**  
Germany, 2,500 birders

These events have reached an audience of 48,000 birders. Typically birders do not attend these events annually, but rather once in 3 to 5 years. So our audience there is largely new each year. The British Birdfair STN has worked since 2002, and the others we have exhibited at from 1 to 4 years.

Between the media and bird fairs coverage, STN has successfully grown the birder tourism in the Valley quite substantially, from my estimate of under \$100 million a year in the 1990s to about \$500 million currently.

There are other factors that attract birders to the Valley, in particular our great diversity of birds and of birding destinations, but that is another story, Locating Money Trees.

Read Locating Money Trees on page 4.



801 Main St. - Alamo, TX 78516

Tel. 956.782.9912

Email: [alamoinn@aol.com](mailto:alamoinn@aol.com)

[www.alamoinnbnb.com](http://www.alamoinnbnb.com)

*We provide everything needed by birders*



*People's Covenant Church*

800 South Standard  
San Juan, Texas 78589  
Tel. 956.787.1034

**Worship Services**

11AM Sundays

**Bible Study - English**

Sunday 9:30AM

**Bible Study - Spanish**

Tuesday 7:00PM

*Everyone is Welcome!*



# Locating Money Trees

by Keith Hackland (alamoinn@aol.com)

Money trees are native Valley trees that attract our wonderful native birds. These birds attract birders to the Valley, so many birders that their spending is about half-a-billion dollars in the Valley each year. Hence I have named these great Valley trees “money trees”.

So where can we find money trees and the fantastic Valley birds they attract? Almost anywhere in the Valley, including in our yards. In addition, the Valley has a network of great birding destinations, woodland parks, sanctuaries, and refuges, that include wetlands and grasslands, and are set up for the comfort of birds. They also attract birders. We call these great places “birding hot spots”.

The Valley has over one hundred birding hot spots. Most of these can be found on the Valley Birding and Butterfly Map, available at Chambers of Commerce and Convention and Visitor Centers in cities around the Valley. The map marks birding hot spots, and on its reverse side provides directions to each. Googling their names will, in most cases, also provide this information.

There are a great many lesser known birding hot spots. In addition, birding is great along most Valley roads, in city parks and cemeteries, at Valley birding bed and breakfasts (see RGV-bedandbreakfast.com), of course in our yards, and where ever money trees grow. In addition to our money trees, there are also other factors that attract birders to the Valley. Top of that list is our 540 species of birds found here. Why do we have 540 bird species? In one word, due to geography, or as realtors like to say, location.

Many Central American tropical

bird species find their northern limit in the Valley’s tropical river woodlands. The richest area in the Valley for money trees is along the Rio Grande. These humid woods are where many tropical species are at home, nest, and raise young. Likewise, many Eastern U.S. species find their southern (and western) limit here. So we find tropical and eastern species of birds overlapping, with a sprinkling of western species showing up too.

With the Valley close to the western circumference of the Gulf of Mexico, and at the south of the United States, we are ideally located for migrants. Migrating birds that head straight south over the ocean, fly over us to reach the Gulf and the Yucatan Peninsula. These are generally smaller song birds and hummingbirds. Others, generally larger birds, such as raptors, shorebirds, and water birds, follow the land around the Gulf, and they too must fly over us. The migrants often stop for a few days in the Valley to fuel up on food, water, and rest.

Warm winters in the Valley’s Tropical Texas attracts not only people, but also birds. Many bird species are Winter Texans here too.

Birds love water, and with the fresh water Rio Grande, canals, ditches, reservoirs, and resacas, the Valley is ideal for water birds. Those that like salt water find comfort here in the salt lakes, Laguna Madre, ocean, and on our wide beaches.

Vagrant birds, that is birds we don’t expect here, often show up. One good vagrant can attract hundreds of birders, flying in to see it. The Valley is one of the best spots in United States to find vagrants. We have many every year.



The best known birding hot spots, from East to West, are:

SPI Birding and Nature Center, South Padre Island  
 SPI Convention Center and Board Walk, South Padre Island  
 Laguna Atascosa National Wildlife Refuge, Rio Hondo  
 Boca Chica Beach, tracts of LRGV N.W. Refuge, Brownsville  
 Sabal Palm Sanctuary, Brownsville  
 Oliveira Park, Brownsville  
 Resaca de la Palma State Park, Brownsville  
 Palo Alto National Park, Brownsville  
 Port Mansfield area  
 El Canelo Ranch, Raymondville  
 Hugh Ramsay Park, Harlingen  
 Los Fresnos Wetlands, Los Fresnos  
 Estero Llano Grande State Park, Weslaco  
 Frontera Audubon Sanctuary, Weslaco  
 Valley Nature Center, Weslaco  
 Delta Lake County Park, north of Weslaco  
 Santa Ana National Wildlife Refuge, Alamo  
 El Sal del Rey, tract of LRGV N.W. Refuge, north of Alamo  
 Edinburg Wetlands, Edinburg  
 Quinta Mazatlan, McAllen  
 McAllen Nature Center, McAllen  
 Anzalduas County Park, Mission  
 National Butterfly Center, Mission  
 Bentsen R.G.V. State Park, Mission  
 Chihuahua Woods, La Joya  
 Yturria Tract of LRGV N.W. Refuge, Rio Grande City  
 Roma Bluffs, Roma  
 Salineno Tracts and River, Salineno  
 El Rio R.V. Park, Chapeno  
 Falcon County Park, Falcon Heights  
 Falcon State Park, Falcon Heights  
 San Ygnacio County Park, San Ygnacio



*“Someone is sitting in the shade today because someone planted a tree a long time ago.”*  
 Warren Buffett

Coats & Tails



**Professional Grooming  
at  
Competitive Prices**

**1615 N. 11½ St. in McAllen  
(Off Pecan, West of 10th St.)  
956-648-2416  
Salvador Regalado**

Flea & Tick Dip  
  
 Dog Sitting

Bring this ad with you and get a  
**FREE Flea & Tick Dip**  
 with the purchase of a bath or grooming

“Your Pet’s Comfort is Our Priority!”

Paws and Claws  
Pet Resort

call to arrange a **FREE TOUR**  
of Our Facilities



**990 S. Tower Road ... Edinburg, TX 78542 (956) 384 - 9301**  
 Mon - Fri, 9 am - 6 pm Sat, 9 pm - 12 Noon ... Sun, 3 pm - 6 pm  
 www.pawsandclawsgv.com pawsandclawsedinburg@gmail.com

**“It is not what I like, it is what “Sully” the border collie likes. He gets the best of care ...”**  
**“Our dogs always love staying at Paws and Claws ... we appreciate all you do to make them feel so comfortable!”**

## Observations On Life by Ben Dover

### The Plaque

Referencing that short period of time during which I was trying to develop and compose my thoughts in order to create this article this morning, my eyes traveled up to the wall above my computer desk. I found myself looking at a wooden plaque that has the words, "To yourself be true".

The artist who fabricated this creation is just another guy who rents a booth located at the local Flea Market. He saws out the designs and finishes the artwork and makes these plaques of virtually all shapes and sizes. In my opinion, his work is impeccable, and unique. For the past two years I have befriended this artist and admired the work that he was displaying. I can only think of one word in retrospect but in support of this man's work. His jigsaw artwork is *superior* to any other competitive work I have ever seen.

The piece I admired each time I passed this booth, was a small plaque on which was a raised and "S" shaped musical staff. Although there was no musical meaning to the notes placed on this staff, it was certainly correctly displayed in every respect.

This entire piece was made of walnut wood, and the staff was of some lighter colored wood. Each time I would pass this place, I would admire the piece as being wonderfully representative of the style of music I have played all of my life. The artistic presentation in my opinion displayed a form of art that impressed me deeply.

I'll bet I have looked at that piece



twenty times on various occasions, and then simply walked on and forgot about the entire episode.

This was true until one day when my sweetheart and I were walking past his booth. I again looked at the plaque and then as I was about to leave, the artist said, "Ben, you really like that piece. Don't you?" My reply was certainly supportive and positive. He then said, "You now own it". I chuckled and said something to the effect, that I didn't have that amount of money in my pocket. He then replied that my sweetheart had been there earlier and had purchased it. I was totally amazed by this experience, and turned to my sweetheart and asked how, when and where? Her reply was that last night she won a prize of a hundred and forty dollars, and wanted to share it. Well. If this little tale of truism doesn't trip your trigger, it certainly did mine.

Have a nice day.

## Recycling at PSJA High

Recycling is a big problem for the environment that receives little to no attention at all.

Daniel Hernandez, a junior currently enrolled at PSJA Early College High School, sought to stop this problem at his school or at least reduce it. During a University Scholars class, he was assigned a change agent project to help add interest to his resume and college applications. The Change Agent's purpose is to help build leadership qualities and provide a real life situation that a person can help with.

Given the task, he searched for what he was going to put as the main focus for the project. When searching for a suitable task, he faced the problem of clutter, such as paper and bottles, that could easily be recycled.

After a challenging time of creating a project idea, he was struck with the idea of recycling.

Deciding how to approach the task, he decided, along with another student, Ashley Martinez, to start a club called R<sup>3</sup>.

"The club was hard to create, but with a suitable sponsor, we were able to receive the principal's permission," said Daniel. "The only thing in our way now is our local recycling center."

The first plan of action was to promote the club and gain active members. As the first club of its kind in years, or possibly ever, Daniel had very little to no background on how to run R<sup>3</sup>. The current member status is mostly band members at the school and some outliers.

After recruiting, the next plan of action was to collect bins for recycling from the local recycling center. After some initial setbacks, such as communication problems in the club, Daniel is in the process of collecting more bins to place in the major walkways in his school.

"Although we do not look completed, we will continue to work hard to get what we need and we will reduce the spread of recyclable items throughout our school!" said Daniel.

The article above was submitted by Daniel Hernandez, a student at PSJA Early College High School.

If you are a student or teacher at a local school and you have an article you would like to have considered for publication, contact Rod Graham, [rod@rgvaff.com](mailto:rod@rgvaff.com)

# Love of Christ ELCA Lutheran Church

**Worship Service  
11AM**

**Please join us for  
'Friendship and Coffee' at 10:15  
prior to the Service.**

**Corner of  
Border & Third Street  
in the facilities of  
Faith Lutheran Church  
Weslaco, TX  
956-447-1337  
[www.loveofchrist.net](http://www.loveofchrist.net)**

**ADVERTISE IN THE VALLEY SPOTLIGHT!**

**call 956-457-8600**

**Email: [Rod@RGVaff.com](mailto:Rod@RGVaff.com)**

# The Fund Distribution Process at United Way of South Texas

by Eloise Montemayor ... Community Relations/Public Sector Associate

United Way of South Texas is a local, non-profit organization with the capacity to affect individuals from birth to end of life. Because of our mission and our partnership with volunteers and other non-profit agencies, our footprint in the local community is one of the largest and most impactful. Consequently, United Way staff and volunteers make accountability their top priority via the Fund Distribution process.

Every year, volunteers from various businesses and organizations in our local community serve on our Fund Distribution Panels to thoroughly review agency applications, financial audits and to make on-site visits. In addition, volunteers review the agencies' goals and outcomes. In April, partner agencies kick off Fund Distribution by submitting their applications for funding consideration. Volunteers consider the following when reviewing agency applications and before making a final decision: Audit, Program(s), Summary and Outcomes, Measurement Tools (to measure program success) and Clients Served. In May, Phase I, United Way's Audit Committee meets with agencies to discuss budgets and audits. Phase II of the Fund Distribution process consists of agency visits. In June, Phase III, volunteers will visit 21 agencies that provide services to approximately 286,000 residents. Services offered to these residents by our partner agencies fall into our four focus areas: Education, Financial Stability, Health, and Safety Net. The services include disaster relief, end-of-life care, character-building for children, job training for individuals with disabilities, emergency shelter and much more.

By the end of summer, our Fund Distribution volunteers make a final decision on which agencies will receive United Way funding. United Way's partner agencies during the 2016-2017 year



Pictured in front row (seated) from left to right: Thelma Garza, United Way; Sabrina Walker, Boys & Girls Clubs of Edinburg; Estella De Anda, Women Together; Sandra Garza, SCAN; Diana Almaguer, Court Appointed Special Advocates (CASA) of Hidalgo County; Delia Perez, Starr County Victims of Domestic Violence; Second row from left to right: Dr. Marla Guerra, Fund Distribution Chair; Adriana Rendon, Boys & Girls Club of Edinburg; Veronica Garcia, Girl Scouts of Greater South Texas; Jennifer Rektorik, Aurora House; Janie Maldonado, Silver Ribbon Community Partners; Juana Salazar, The Salvation Army; Maggie Pena, The Salvation Army; Sara Saenz, Goodwill Industries of South Texas; Nadia Ochoa, Palmer Drug Abuse Program; Belinda Flores Simons, Su Casa de Esperanza; Fito Mercado, Fund Distribution Co-chair; Amelia Rojas, United Way; Back row from left to right: Richard Morin, Mercedes Recreation Center; Ernest Espinoza, Boys Scouts Rio Grande Council; Lyle Skaggs, Boys & Girls Club of Alamo; Luduvico Martinez, Boys & Girls Club of Mission; Dalinda Gonzalez-Alcantar, Boys & Girls Club of McAllen; and Ventura Hinojosa, Starr County Victims of Domestic Violence.



Pictured above: Dr. Marla Guerra, Fund Distribution Chair, and Fito Mercado, Fund Distribution Co-chair, along with the rest of the 2016-2017 Fund Distribution Volunteers. These volunteers represent the following companies and organizations: South Texas I.S.D, UT-RGV, AEP Texas, BBVA Compass Bank, Burton McCumber & Cortez LLP, Chase Bank, City of McAllen, City of Weslaco, Elsa State Bank, Frost Bank, H-E-B, Infinity Auto Insurance, Inter National Bank, JP Morgan Chase Bank, Lone Star National Bank, Mission CISD, Navy Army Community Credit Union, Sam's Club, Security First Credit Union, Target, Texas Regional Bank, The Monitor, Universal Pawn, Veteran's Administration, Walmart.

were American Red Cross, Aurora House, Boy Scouts Rio Grande Council, CASA of Hidalgo County, Children's Advocacy Center, Community Council of the RGV (211), Girl Scouts of Greater South Texas, Green Path Financial Wellness, Goodwill Industries of South Texas, Hidalgo Youth Center, Mercedes Recreation Center, Palmer Drug Abuse

Program, Serving Children & Adults in Need (SCAN), Silver Ribbon Community Partners, Starr Co. Victims of Domestic Violence, Su Casa de Esperanza, The Salvation Army, Women Together, Boys & Girls Club of Alamo, Boys & Girls Clubs of Edinburg, Boys & Girls Club of McAllen, Boys & Girls Club of Mission, and Boys & Girls Club of Pharr.

We appreciate all our volunteers, supporters and partner agencies.

To find out more about the programs that United Way of South Texas supports, please visit [www.unitedwayofsotx.org](http://www.unitedwayofsotx.org) or call United Way at 956.686.6331.

If you would like to support our programs with a monetary donation, you may mail a check to United Way of South Texas at P.O. Box 187, McAllen, TX 78505-0187.

There is the story of a pastor who got up one Sunday and announced to his congregation: "I have good news and bad news. The good news is, we have enough money to pay for our new building program. The bad news is, it's still out there in your pockets."

....

A minister parked his car in a no-parking zone in a large city because he was short of time and couldn't find a space with a meter.

Then he put a note under the windshield wiper that read: "I have circled the block 10 times. If I don't park here, I'll miss my appointment. Forgive us our trespasses."

When he returned, he found a citation from a police officer along with this note "I've circled this block for 10 years. If I don't give you a ticket I'll lose my job. Lead us not into temptation."

....

A minister waited in line to have his car filled with gas just before a long holiday weekend. The attendant worked quickly, but there were many cars ahead of him. Finally, the attendant motioned him toward a vacant pump. "Reverend," said the young man, "I'm so sorry about the delay. It seems as if everyone waits until the last minute to get ready for a long trip."

The minister chuckled, "I know what you mean. It's the same in my business."

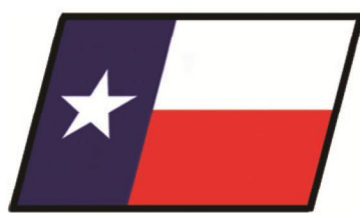
# Race in to Burns Motors for our

# SPRING CLEARANCE EVENT!



Everyone is in  
**The Winner's Circle**  
with deals up to  
**\$5000**  
**Cash Allowance!**

The Rio Grande Valley's  
**#1 NEW**  
Chrysler, Dodge, Ram  
and Jeep Dealer



# Burnsmotors.com

THE BIG STORE



**RAM**

# 956-984-4433

# Hawk Watch at Santa Ana National Wildlife Refuge (SANWR)

By Christine Donald, Outdoor Recreation Planner

The Hawk Watch at SANWR is an annual survey of all hawks that are migrating through the Rio Grande Valley. The Hawk Watch is March 15th- April 15th at SANWR. It begins early in the morning around 7:30 AM and runs till after lunch around 1:00 PM with volunteers, wildlife biologists, and bird lovers counting the number of hawk species during that time.

Visitors and birding lovers are welcome to come out and learn about the process and even volunteer if they want to get involved. Visitors are welcome to come after that time on their own or even get higher to view the migrating hawks on our 40 foot observation tower, which is a 15-20 minute walk from the visitor center. There are around 22 species of hawks that can be seen and often in large numbers. There is something powerful and magnificent about seeing these beautiful birds of prey gliding effortlessly high in the sky. Data collected gives information on hawk migration patterns, behaviors, and creates awareness. SANWR has been conducting the hawk watch since 1990 and is dedicated to the conservation and preservation of hawks. All the data is sent in electronically to Hawk Migration Association of North America who works through all the data to get information on the number of species, count of a particular species, time of migration, and much more.



**If you are interested in volunteering for next year's Hawk Migration, please contact Santa Ana NWR for more information and to sign up. Call 956-784-7500.**

## The Pharmacy Corner

Trino Medina, RPh

Doctors Renaissance Hospital Clinical Pharmacist, CVS Clinical Pharmacist

I went to go visit my elderly friend at the local Day Care center here in Alamo. I asked him how he was doing to which he responded that he was as well as could be expected for an 89 year old. He continued to tell me that his whole body was aching! His hands were shaking from his arthritis. His legs were unstable from the osteoporosis. He had trouble walking so he recently acquired a walker. He could not hear very well so had to get a hearing aid. He was taking 10 pills in the morning and 12 in the evening. He then took a look at my sports car outside and took out his wallet and with a big grin on his face told me he still had his license so was still able to drive!

Mother's Day is fast approaching and this article is dedicated to all the moms out there! I take care of my elderly mom and it has been a learning adventure. She is 87 years old and has to use a walker to move around. Her bones are always hurting. She usually remembers everything from her childhood on, but at times gets confused with names and places, especially when she takes her pain pills. The only thing she has going for her is her vision, she had cataract surgery several years ago so her vision is better than mine! My mom is just like many other elderly people, struggling with health issues but happy to be with her family.

Many elderly people have to deal with incontinence, immobility and cognition issues. Most pharmacies carry adult diapers in different sizes, brands and prices.

I recommend you find out if your insurance covers the cost of incontinence items like diapers, bed pads, bed pans, toilet chairs and tubing. Many pharmacies can help you with the insurance billing.

Some insurance companies also cover canes, walkers and wheel chairs. Insurance companies can limit the brands or the cost so you may need to pay the difference for a better brand that does not leak or better tubing that does not break as easily. I recommend you pay the difference if possible to avoid any embarrassing issues in public. Using a wheel chair may not be what most proud elderly people want but may be the most convenient to use when going on long walking trips or even going to get groceries. The elderly person does not get tired and it becomes easier for the caretaker to do other things. Always remember to help elderly people to the bathrooms and showers! You want to avoid any falls! Elderly people have dry and brittle bones that can break with any fall or slip. I recommend a shower chair and toilet chair with rails for safety reasons. It is worth the cost for your loved ones security.

Many elderly people get put on Namenda or Aricept or the generics of these two to help with memory.

Remember, medicines may slow the progression but will not cure the patient with cognitive issues like Alzheimer's.

I recommend talking to your doctor about possible medicinal use for the slowing of any degenerative diseases including memory and bones. The doctor will be able to test your memory and your cognition. He can also perform test on bones! Elderly people like my mom have many issues to deal with so please help them out even if they don't ask for help! Mother's day will come and go but please remember to tell your mom you love her and hug her. She won't be around forever and it is never too late to remind her that you are still her child even if you are getting closer to her in age!

Trino Medina:

Clinical Staff Pharmacist, DHR, CVS.

Please send requests for topics or comments to [tmedinarph@msn.com](mailto:tmedinarph@msn.com) or text me at 956-460-4978.

Thanks for your support in my new adventure!



# Juan Diego Academy Students Help Renovate a Low-Income Home

Juan Diego Academy Catholic Regional High School (JDA) in Mission partnered with Proyecto Desarrollo Humano in Peñitas to renovate the home of a low-income family on Friday, April 21, 2017 as part of their annual Sophomore Service Day. The home renovated belongs to the Perez family on Jayden Drive in Peñitas, Texas. The students helped beautify their home by painting the exterior of the home while others helped build new steps into the home.

“We were extremely honored to be able to serve the community and grateful to the Missionary Sisters of Mary Immaculate for helping to support our work with Proyecto Desarrollo Humano,” said President & Principal Bob Schmidt. Since the school opened in 2011, JDA has included in the four-year retreat/campus ministry plan the service retreat for sophomores. “It is a good point in their maturity as students and young Catholics to come together to do something organized such as to serve others through projects like this. Many are also preparing for the Sacrament of Confirmation so this community service is ideal for their growth” said Schmidt. Proyecto Desarrollo Humano is a non-profit organization established by the Missionary Sisters of the Immaculate Heart of Mary. They serve the communities of western Hidalgo County.

“Helping, caring and understanding others can be a rewarding experience for all involved. Beautifying the exterior of the house and painting the home, brings



them hope.

Real joy is found not in being served but in choosing to serve others” said Kayla Gonzalez, Sophomore Class President.

The class also presented the family with a basket of toiletry items and a basket of food. The family, students and staff members ended the day with Mass at St. Anne’s Church in Peñitas.

“Love your neighbor as yourself.” This Christian premise is the driving force behind JDA’s Sophomore Class Service Project. Students lent their efforts to the Perez family home in this painting project said Viviana Saenz, Sophomore

Class Sponsor.

“It is hard work but always worth it”, said Saenz.

The project was made possible by several donors who provided materials, time and their talents to help the students bring the project to fruition.

JDA’s mission as a Catholic regional high school, is to offer a quality, comprehensive academic curriculum, utilize the latest in technology and innovation, and educate the whole person: mind, body, and spirit, instill a sense of Christian responsibility and service to others and train leaders to meet the current and future challenges of society.

## The Grotto

now selling by consignment at

**4 Ever Memories Antiques and Collectables**

206 E Jackson Ave. - Harlingen, TX 956-367-5992



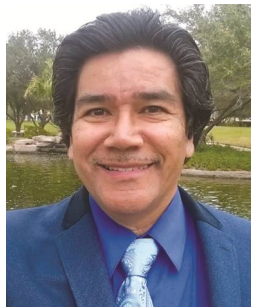
## Carlos R. Canas

over **35 Years**

**Experience!**

*Singing Only  
the Very Best Oldies!*

**American Standards  
Country Classics  
50s Rock & Roll  
Easy Listening 40's - 70's**



**AVAILABLE FOR**

**Dances, Reunions, Ret. Communities  
RV Resorts, Dinner Music, Special Events  
Weddings, Funerals, Rosaries, Wakes  
and Sing-A-Longs**

**Mornings - Afternoons - Evenings**

**Call 956-241-1967 to book  
Carlos for YOUR EVENT TODAY!**

Available Statewide Year 'round

We have weekly specials on our  
**Handmade Jewelry, Rosaries, Art  
and Religious Articles**

Look for us ... Vendor #13

Bring this ad to receive

**30% OFF** any regularly priced item

(VENDOR #13 ONLY)

## Most Seniors Never Get Enough Exercise

In His wisdom God decreed that seniors become forgetful so they would have to search for their glasses, keys and other things thus doing more walking. *And God looked down and saw that it was good.*

Then God saw there was another need. In His wisdom He made seniors lose coordination so they would drop things requiring them to bend, reach & stretch. *And God looked down and saw that it was good.*

Then God considered the function of bladders and decided seniors would have additional calls of nature requiring more trips to the bathroom, thus providing more exercise. *And God looked down and saw that it was good.*

So if you find as you age that you are getting up and down more, remember it's Gods will.

# For Kids Only

No matter how old you are!

Have Fun and Learn  
while you solve these puzzles and  
practice your coloring skills

## National Police Week Is The Third Week Of May



In 1962, President John F. Kennedy signed a proclamation which designated May 15 as Peace Officers Memorial Day and the week in which that date falls as Police Week. Currently, tens of thousands of law enforcement officers from around the world converge on Washington, DC to participate in a number of planned events which honor those that have paid the ultimate sacrifice.

The Memorial Service began in 1982 as a gathering in Senate Park of approximately 120 survivors and supporters of law enforcement. Decades later, the event, more commonly known as National Police Week, has grown to a series of events which attracts thousands of survivors and law enforcement officers to our Nation's Capital each year.

The National Peace Officers' Memorial Service, which is sponsored by the Grand Lodge of the Fraternal Order of Police, is one in a series of events which includes the Candlelight Vigil, which is sponsored by the National Law Enforcement Officers Memorial Fund (NLEOMF) and seminars sponsored by Concerns of Police Survivors (C.O.P.S.)

National Police Week draws in between 25,000 to 40,000 attendees. The attendees come from departments throughout the United States as well as from agencies throughout the world. This provides a unique opportunity to meet others who work in law enforcement. In that spirit, the Fraternal Order of Police DC Lodge #1 sponsors receptions each afternoon and evening during Police Week. These events are open to all law enforcement personnel and are an experience unlike any other.

Always show respect for all Law Enforcement Officers.  
They are there to help and protect you.  
Whenever you meet a Law Enforcement Officer,  
remember to say Thank You for what they do.

Find these words pertaining to police officers in this puzzle.

- |              |            |
|--------------|------------|
| Academy      | Duty       |
| Badge        | Heroes     |
| Baton        | Honor      |
| Canine       | Protection |
| Chief        | Service    |
| Commissioner | Training   |
| Cruiser      | Uniform    |
| Department   | Weapon     |

Q S E R V I C E Z P G D F O V  
 K V C A N I N E G N B U O R W  
 L V C Q C Y Z C I O N T F E S  
 F U W F Y A R N C C F Y Z N E  
 O Z R V T F I J R P V L F O O  
 E G D A B A N U I E A Z N I R  
 I E A H R J I A I P W O T S E  
 Y Q P T Z S C U H P I G Q S H  
 R I L C E A N O V T O K N I U  
 U P Q R D I N G C K C O J M V  
 V K C E F O Q E V H P H I M S  
 D E M O R P T Z I A E I I O K  
 A Y R R U O T E E Y A S V C A  
 F M X L R P F W N N O T A B S  
 G I V P N P C G T G Y Q I Z I

## Community Garden To Provide Fresh Produce For Soup Kitchen

Gardening! It's hard and dirty work. However, many hands make light work of it. The Salvation Army here in McAllen recently found this to be true working with partners to establish a community garden.

Deep South Texas Master Gardeners and First United Methodist Church Inside/Out volunteers worked tirelessly to assemble four raised planters for the garden. Donations of mulch, soil and compost mix were made by the City of McAllen Public Works Department and the City of McAllen Keep McAllen Beautiful gave \$120 for two planter boxes.

A \$60 donation from The Salvation Army Advisory Board Member Joe DeMarino provided another planter box. The final piece of the project, the all important plants, were donated by the United Methodist Church.

Once assembled, volunteers planted tomatoes, squash, cucumbers, green beans, jalapeños and herbs in the raised beds. Deep South Texas Master Gardeners will be working with The Salvation Army kitchen staff and shelter guests to educate them how to best plant, grow and pick the produce that will be eventually served as part of the daily meals at the Soup Kitchen.

Inside/Out volunteers also donated and assembled hygiene kits for the shelter, and repainted the front of The Salvation Army Corps.

"We are so grateful and excited about our new community garden," said Maggie Peña, Business Operations Administrator for The Salvation Army. "We can't wait to see our garden grow and be able to use the vegetables to feed those who are hungry in our community. Thank you to all who have supported this project and for your commitment to 'Doing the Most Good'."



			1	9	4	6		
		3			7	2		
	9	6			2	3		5
	6			5	8	4	7	
5	1	2		7	3		8	
4		7		2		1		
9			6	8				
	3	8		9			6	1
	5	4	2		1			7

Sudoku No.: 12140

			7					
7			2	3		9		
4	1	8						7
		3			6		9	
9						7	6	5
	6	1				2		
	3	7					4	
		9	6		8			2
	2		4	9				6

Sudoku No.: 35478

		3						7
		9					3	
								5
4					2	9		6
7						3	1	
	8				6		4	
				5		1	9	
		1			4		2	
9			8					

Sudoku No.: 66684

Fill in each square with one digit, using only the numbers one through nine | Numbers cannot repeat within an individual box of nine squares  
 Numbers cannot repeat down a column | Numbers cannot repeat across a row

*Jac-Lin's*  
**FLORIST & Art Gallery**

*The Lamb's Loom*

Jacque Hull, Owner  
 jaclins.florist@gmail.com  
 www.jaclinsflorist.com

1209 Pecan Blvd.  
 McAllen, TX 78501  
 800-880-5253 | Fax: 956-686-7035  
**956-686-5252**

**Do You Have A  
 Mobile Home or Rv  
 For Rent or Sale?**

**Advertise it at  
 WinterTexanInfo.com**



**Adelante Alamo!**  
 → THE NEW VISION →  
**Moving Alamo Forward to the Future**

**Elect** Trinidad "Trino" Medina for City of Alamo Commissioner Place 1  
**Reelect** Robert "Mailman" De La Garza for City of Alamo Commissioner Place 3



### Let's Make Alamo Healthier!

Adelante Alamo is committed to making more walking trails, making more biking trails and updating our city parks! Our Alamo families deserve nice walking trails to exercise and nice playgrounds for our children. We will be working with our parks department to get them the budget and personnel they need to accomplish this. Adelante Alamo wants Alamo to have nice parks so families can go and celebrate their birthdays and holidays in our city. Families will be able to host parties and have family BBQ's at any of our city parks. Our swimming pool needs to be open for adults and teens to exercise.

This is accomplished by designating an area for people to use to swim laps. We are also committed to having bike trails and bike right of ways so our citizens can exercise using their bikes. It has been proven that healthy families are happy families. Families that exercise together are more motivated to do activities outside and will be healthier families. Parents and grandparents can lead by example especially when they see nice walking and biking trails. Adelante Alamo is committed to beautifying our city and helping our citizens lead more healthy lives by providing the means to stay healthy by making more walking trails, making more biking trails and keeping our parks clean and updated.

Political Ad paid for by candidates | Nellie Medina, Treasurer | 809 E Ridge Rd., Alamo, TX 78516

# Mesquite RV Park in La Ferial, TX

## OPEN ALL YEAR!



**UNDER NEW MANAGEMENT**



**Now Accepting Permanent Park Models!**  
 Call us Today about our MOVE-IN SPECIAL

### LOW SUMMER RATES!

### As low as \$6.20\* PER NIGHT

\*Based on minimum 30 night stay (monthly rate = \$185 + electric)

**Families on Vacation**  
**Construction Crews**  
**Medical Professionals**  
**Missionaries**

### EVERYONE is WELCOME!

Mesquite RV Park  
 11924 W Business 83  
 La Feria, TX 78559

956-357-8686  
 MesquiteRVpark@yahoo.com  
 www.MesquiteRVparkTX.com